

**HenryGlass<sup>®</sup>**

APERTURE CONTEMPORANEE

**COMPANY PROFILE\_2023**



HenryGlass was born in a territory full of tradition and culture, placed between Venice, historic homeland for the glass, and the interland of the Palladian Villas.

In Mansuè, in province of Treviso, from the raw leaf the door becomes anything the client wants: a glass wall, a boiserie and many other things.

The product is able to satisfy every need for both the lovers of the classic and the ones who likes the modern and contemporary design. The final outcome is a tailor made product, a perfect combination of technique and aesthetic.

Since the entire cycle of the doors takes place in the factory, the top quality is guaranteed.





1988  
Foundation of the company

1990  
Vetroveneto collection

1997  
Tuttovetro sliding door patent

1998  
First attendance at the SaieDue in Bologna

2001  
Tuttovetro swing and double-opening doors

2007  
Project for the new offices in Mansuè

2010  
ISY frame

2012  
Inside and Absolute sliding systems

2014  
HenryGlass wooden door and Vesta walk-in closet

2016  
Stratified glasses

2017  
"Impressions" decoration collection

2019  
Manhattan framed door

2020  
"Beyond the Matter" decoration collection and new catalogue

2022





# :vision

We dream that there may be an open door for each person.

A **tailor made door** that satisfies the tastes, the personality, the needs and the functionality. A door not only signed by HenryGlass but also by the same customer as an active part in the design of his own product.

Our aim is to design opening systems that connect the environments but also people among them.

It's a **conceptual opening before that being spatial.**





# :mission

The aims we have set will lead us to **consolidate the Italian market** and to discover the foreign one. Areas already reached as France, Switzerland, Germany, UK, Russia, USA and India will be increasingly enhanced with the aim to **open new markets**.

Our path want to cross more and more with the **design approach** related to **architectural firms** and to the **contract** sector by realizing technical and aesthetic **high range** solutions to better meet the refined needs of a increasingly demanding clientele.



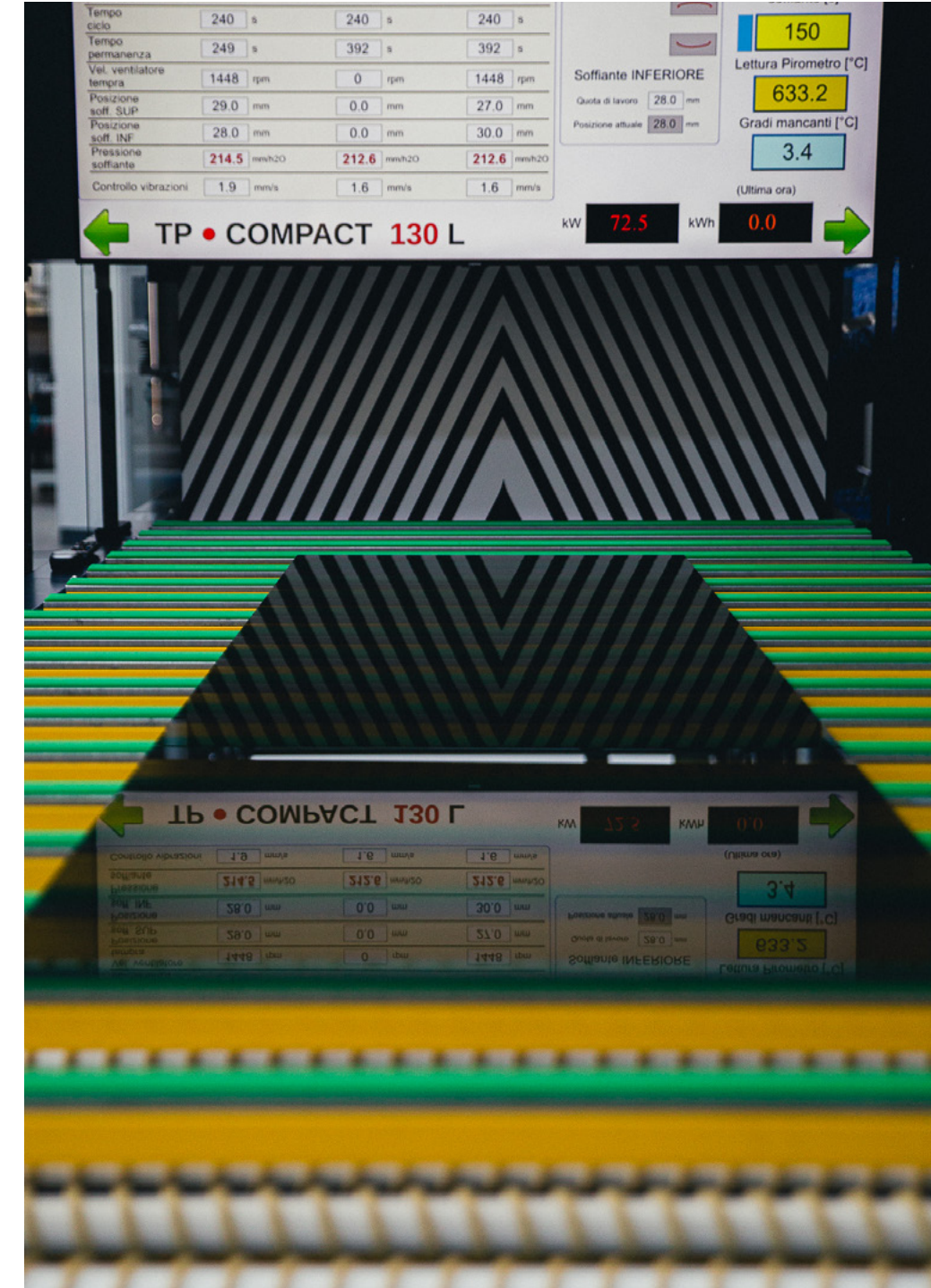
# art and culture

**Art and culture** of the glass are the milestone on which HenryGlass found its own identity and build its future, by making the ancient craftsmanship contemporary.



# technologic innovation

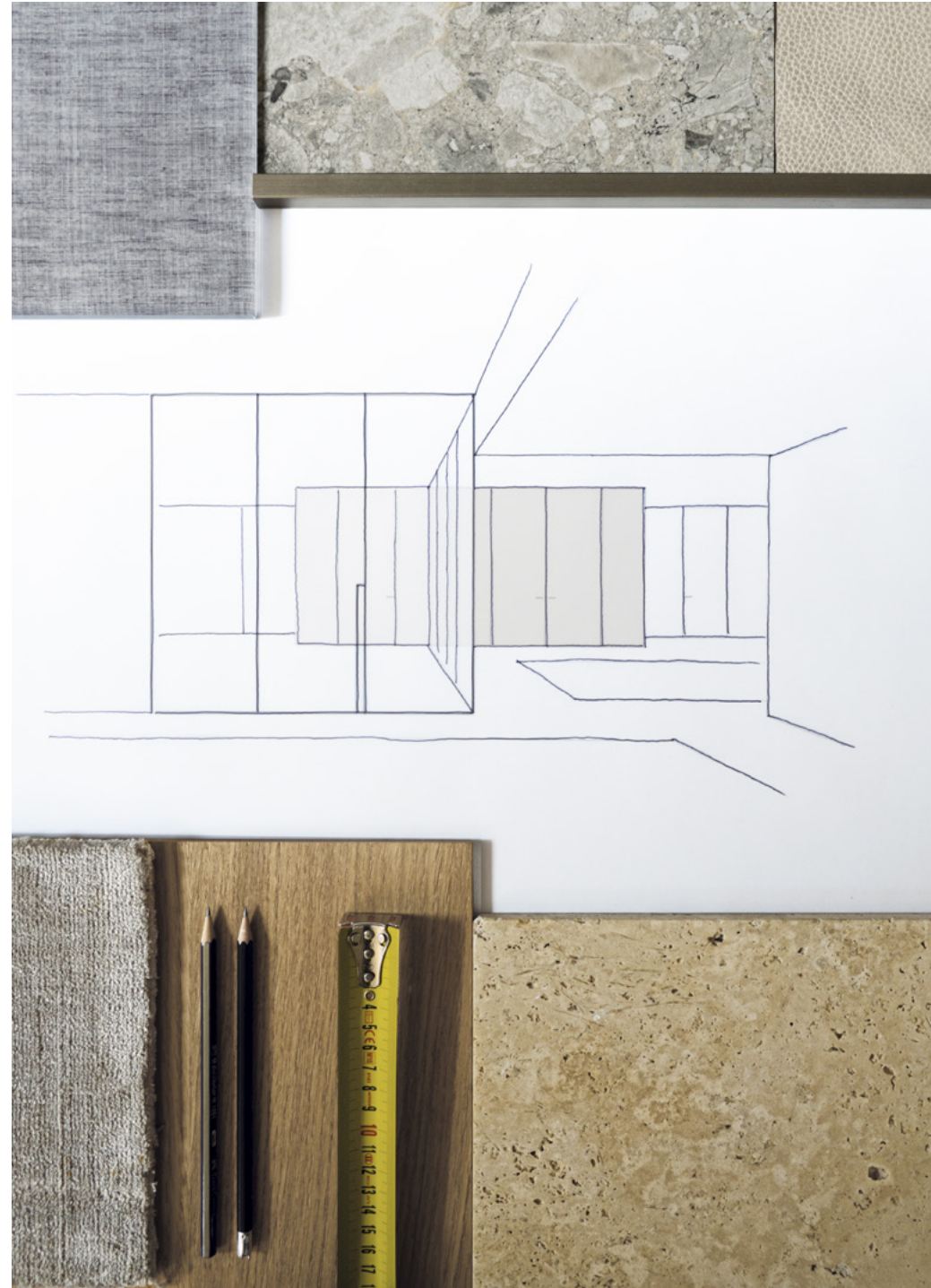
Technological innovation is an essential dowel for the company because only through continuous investments it is possible to transform the craft knowledge in forefront industrial know-how.





# :flexibility and personalization

The **flexibility** and the **personalization** of the product are other pivotal values for HenryGlass, whose goal is to be always in line with the market and with the needs of the Customer



# :eco-compatibility

**Eco-compatibility** is an element we care about very much; for this reason we use recyclable materials, we produce in a regime with a closed water cycle and we are almost autonomous from the energetic point of view.





# :the people as the focus

For HenryGlass, People are the focus: collaborators and Customers. This makes for the **quality of the service to be the highest in every moment**: from the first contact up to the after-sales assistance.

A competent technical department **gives support to the designing and problem solving** concerning the feasibility of the different systems.

HenryGlass dealers are supported by a **dense network of collaborators**, always welcome and kept updated with **training days** organized for their needs.



# :tailor made

The possibility to decorate the glass is an integral part of the HenryGlass offer. The several decorative techniques permit to **personalize in a creative way** everyone's own environment through the wide range of the proposed graphics and decorative solutions. However nothing prevents the Client from proposing a **decoration or a personal logo** and personalize it to the utmost.

The different chromatic effects suggested by the decorations find **match with the accessories finishes** that complete HenryGlass opening Systems. In this way the projects will be always **consistent in every detail**.

The personalization is guaranteed even in the sizes. Standard heights and widths don't exist: **every door is different from the other and it is tailor made**.

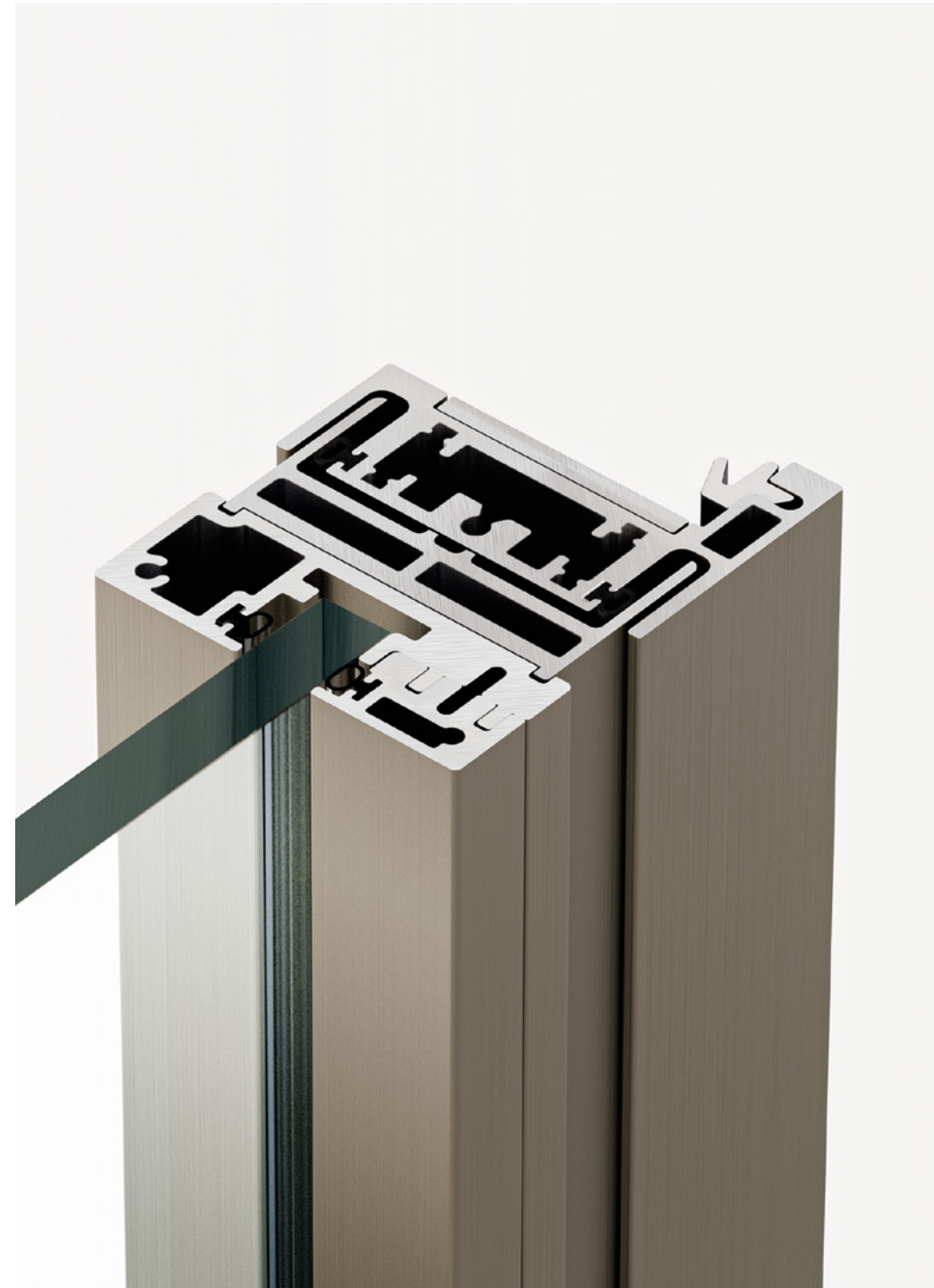


# :planning and quality

HenryGlass opening systems are subject to continuous **technological and stylistic research** that aims to introduce innovative functional and aesthetic projects.

Exclusive technical systems, the various implementation of the accessories with a new design, the creation of unique finishes and decorations make each HenryGlass door an **ad-hoc project** that can fit harmoniously in every environment.

The common characteristic within the proposals is the **quality of the glass**, that ensures reliability and duration over time. All HenryGlass glasses, even the stratified ones, are subject to the tempering process in order to ensure security and a longer resistance compared to normal glass.



# :customized industrial processes

A tailor made product has to be placed side by side with highly customized productive processes. That's why HenryGlass **machinery are designed specifically for its needs** and with an on-demand management system that can respond to the complexity of the production process.

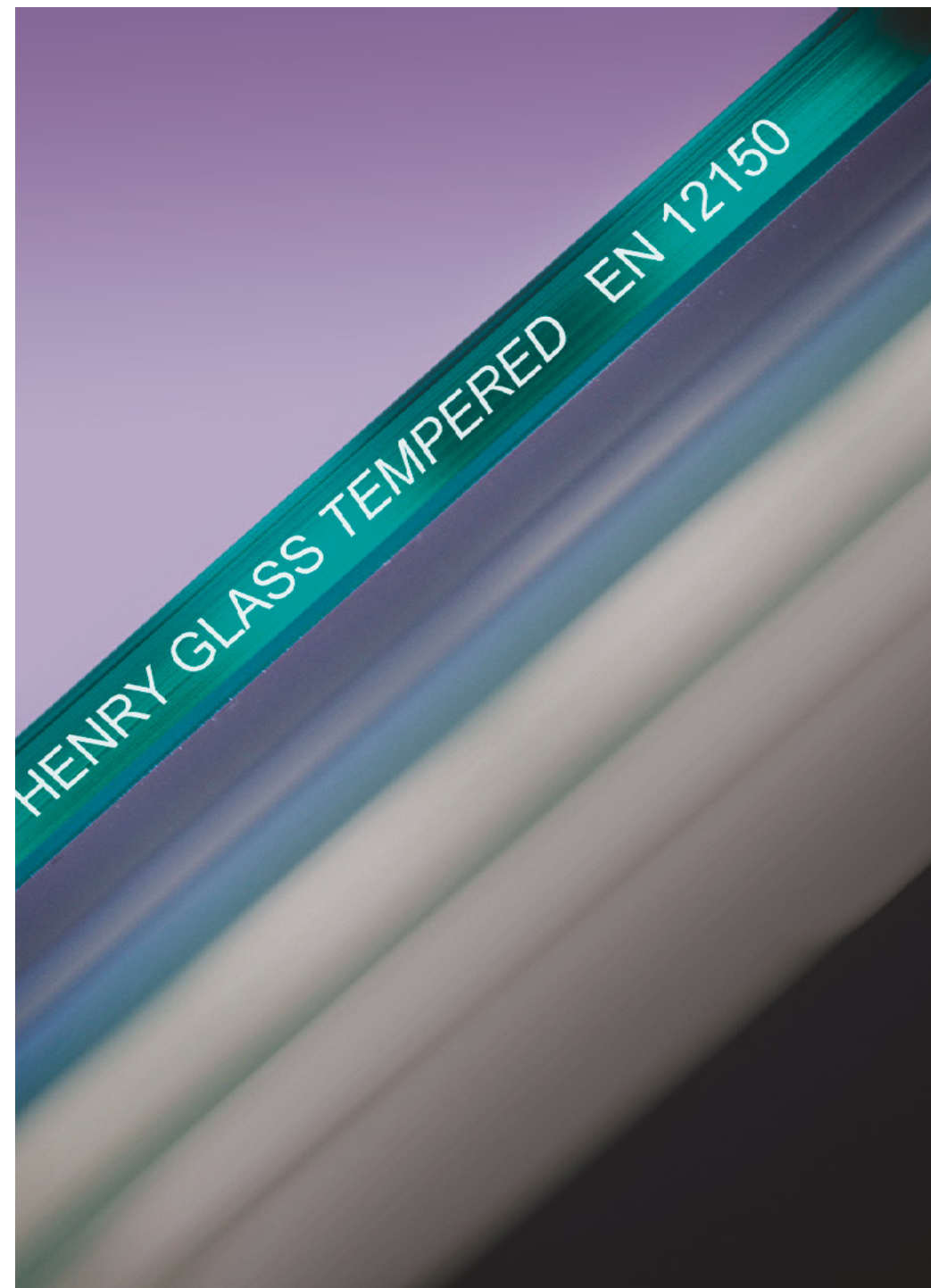
Some examples are a state-of-the-art working center, the stratification line, the internal tempering process, the processes of realization of the exclusive decorations.



# :safety and certifications

All HenryGlass glasses are tempered according to the **UNI EN 12150 and 12600 standards** and are certified for their quality. Internal **crash tests** and **periodic tests of breakage** carried out in specialized centers guarantee the safety of HenryGlass products

Tutti i vetri HenryGlass sono certificati secondo le norme **UNI EN 12150** per quanto riguarda la tempera e **UNI EN 14449** per quanto riguarda la stratifica. Prove di crash test ed altri test di sicurezza interni realizzati periodicamente attestano la **sicurezza dei prodotti HenryGlass** e la bontà dei processi con cui vengono realizzati.



# :HenryGlass design

Continuous **research** and **experimentation** made by HenryGlass have made design of **sophisticated and exclusive** systems possible and in some cases even **patented**.

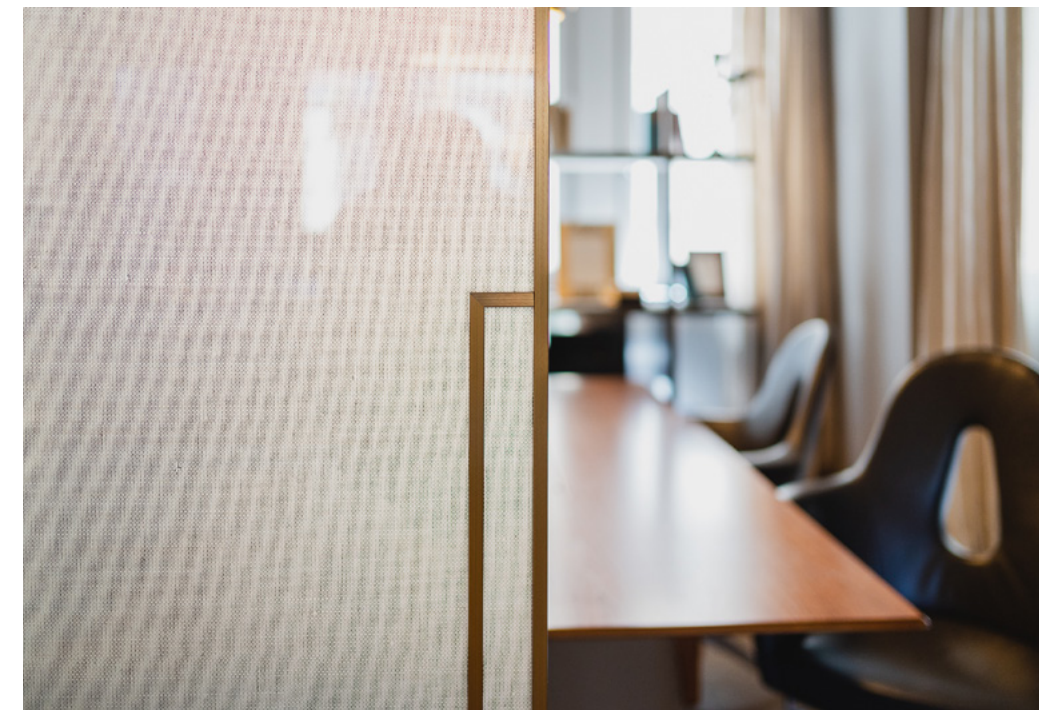
The solutions devised by HenryGlass have allowed to solve technical problems without neglecting the aesthetic aspects. Examples are the exclusive collections of **frames** and the **Inside sliding system** that largely satisfy all the most current design requests. Even the **full-height hinge** is among the exclusive HenryGlass solutions guaranteeing the door opening up to 180° for the swing door in an elegant and refined design



**:case  
studies**

---





# :case study\_1

**Milano – Italy**  
**Arch. Nicola Gallizia**  
**Showroom Bredaquaranta**  
**Manhattan sliding doors**

In via Fatebenefratelli presents HenryGlass through a large sliding door with 4 doors wonderfully set up in an elegant context in which no detail is left to chance.

The transparent bronze glass and the moka finish of profiles and accessories fit perfectly into the context, communicating a feeling of refinement and good taste that go beyond fashion.

Another solution of double sliding door is also proposed, this time in satin glass with Thai decoration and brass finish.





# :case study\_2

**PALERMO – Italy**  
**Arch. Michele Longo, Arch. Davide Cammarata,**  
**Arch. Nicola Gallizia**  
**Showroom Longho**  
**Sliding glass and wooden doors, wood boiserie**  
**and hinged doors and glazed bathroom glass**

Inside the elegant Longho showroom in Palermo, dedicated to furniture, precious combinations of materials and colors coexist that help to outline a clear and precise taste line, without compromise.

In this showroom, the door, the walls and the paneling acquire the same prestige and value as the furnishings, as they are designed in full harmony with the rest of the setting in an integrated and coherent project vision.

HenryGlass' vision is that of completely tailor-made and customizable products for a very demanding and refined clientele. The focal point of the project is the combination of doors and boiserie to create continuity, enhancing some particular perspectives.

As for the wood paneling, the architect chose the Rovere Grigio finish; On the other hand, for the large glass partitions, they chose clear glass with Lino decoration.





# :case study\_3

**Bologna - Italy**  
**PROJECT: Ciclostile Architecture Studio**  
**Private house**  
**Manhattan line doors;**  
**Adela flush doors and lacquered boiseries**

A dynamic apartment with a young style in which HenryGlass glass doors are inserted to allow the light to pass freely between the rooms.

The industrial style of the sliding doors Manhattan line is ideal to emphasize the modernity of the living area.

For the sleeping area the architects chose to give a strong touch of personality to the main corridor by painting in a beautiful cobalt blue walls, ceilings and flush doors Adela.





# :case study\_4

**NEW JERSEY – USA**  
**Architect: David Bartz**  
**Private house**  
**Sliding doors in the living area**  
**and bathroom fixed glass panel**

The project of this beautiful apartment overlooking New York was entirely followed by the Architect David Bartz who divided the space with elegant HenryGlass partitions.

For the dining room, a mutiple Manhattan Line sliding doors system has been chosen, with its black profiles create sharps contrasts with the neutral surroundings. Avenue handles are precious details that enrich the product by obtaining majesty for this elegant open-space. The exclusivity of Linen decoration creates an amazing optical effect arousing curiosity in those who look at it in discovering what there is beyond. For the shower the framed glass partition with black finish, custom made using Linen texture, perfectly adapt itself on this relaxed and intimate space.

Outside wall Manhattan sliding doors give elegance and refinement to the hallway where the smoky glass stand out from the neutrality of the other spaces of the house





# :case study\_5

**Belluno - Italy**  
**PROGETTO: Architect Matteo Fontana**  
**Private house**  
**Manhattan hinged door**

The renovation of an old rustic design choice fell on a modern style without precluding the presence of the characteristic elements of the original structure, such as beams and stone wall cladding, able to embellish the environment with color contrasts with unique charm.

The transparency of the HenryGlass Manhattan line hinged door allows interesting glimpses to the new environments created and the new furnishing solutions.

The extralight clear glass and the black finish profiles, create a beautiful contrast between rustic and modern and go well with the other characteristic elements of the house.





# :case study\_6

Roma - Italy  
**PROJECT: Architect Silvia Morozzi**  
Private house  
Manhattan hinged door

This project concerns the interesting renovation of an apartment located in an Umbertino palace in the heart of Rome, where the main need was to modernize a space characterized by high brick barrel ceilings, and to bring natural light into the central room, used as a kitchen / living room, without windows.

The two HenryGlass doors have become real light sources and furnishing elements at the same time, thus dividing the living area from the large bathroom behind.

The choice of the Manhattan line in black finish combined with extralight frosted glass accompanied by refined English-style partitions, gives the space a minimal elegance and a formal cleanliness with a timeless taste.



# :case study\_7

**LUBIANA – Slovenia**  
**PROGETTO: Kreadom Architecture Studio**  
**Private house**  
**Manhattan sliding doors**



The space, designed and elegantly furnished, is distinguished using glass partition walls, a very interesting solution to meet the needs of home living.

Glass will always be able to impress for its great versatility and the brightness that brings into the room.

For the subdivision of the functional areas, the architect chose a large, framed Manhattan sliding door with Trame decoration in slate finish, obtaining an attractive and contemporary space.





# :case study\_8

**Treviso - Italy  
Private house  
Manhattan sliding doors**

Industrial furniture is appreciated thanks to its characteristics: it is modern, dynamic and with a strong personality.

It is made of essential pieces, often recovered, vintage objects and furniture with clean lines with a calibrated use of color.

This house reflects the salient features of this style and the large Manhattan sliding doors in transparent glass with black finish metal profiles fit perfectly into the context.



# :case study\_9

**UDINE - Italy**  
**Private house**  
**Sliding doors system between the kitchen**  
**and living areas**



The Vitra Inside System in its highest expression of purity and brightness. New image solutions to enrich the everyday: external wall sliding doors with tempered clear glass and sliding track to enclose and divide the kitchen from the living room area.

Ideal for separating without dividing, the system of external sliding doors recessed in the false ceiling helps you make the most of the space as the doors can be fully open when needed.



## **HenryGlass s.r.l.**

via Portobuffolè, 46 A/B  
31040 Mansuè (TV) Italy  
tel. +39 0422 209411  
fax +39 0422 209494  
[www.henryglass.it](http://www.henryglass.it)  
[info@henryglass.it](mailto:info@henryglass.it)

**HENRYGLASS.IT**